



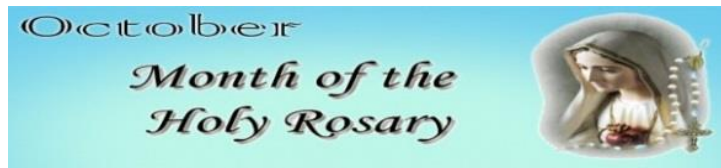
Dear Parents

29 September 2017

It is amazing how quickly September has flown by and what a great start to the new year we have had.

**Thought for the week**

October is the month of the Rosary. It is a wonderful opportunity to pray the Rosary as a family and reflect on the mysteries.



Hail, holy Queen, Mother of mercy, hail, our life, our sweetness and our hope. To thee do we cry, poor banished children of Eve:

To thee do we send up our sighs, mourning and weeping in this vale of tears.

Turn then, most gracious Advocate, thine eyes of mercy toward us, and after this our exile, show unto us the blessed fruit of thy womb, Jesus,

O merciful, O loving, O sweet Virgin Mary! Amen.

**Dates for your diaries !**

**October**

- 2 Reading Volunteer meeting - 2.15pm
- 4 Assembly - 5Y- 9.00am
- 5 Mass - 6Y - 9.00am  
Reception 2018 parent meeting - 2.00pm
- 6 Whole school assembly - CAFOD/Harvest Festival
- 7 **Saturday School**
- 9 Educational visit - Yr 5 - Jewish Museum  
Rome 17 meeting for parents- 3.30pm
- 10 Educational visit - Yr 6 - National Gallery
- 12 Mass - 4B - 9.00am
- 13 Dress as favourite book character day  
Next meeting

**School Council**

Congratulations to our School Councillors.



Edward	3B
Scarlett	3B
Isla	3Y
Cheryl	3Y
Andrew	4B
Salina	4B
Albert	4Y
Yohanna	4Y
Loveth	5B
Layna	5B
Emilia	5Y
Victor	5Y

**Highlights**

Year 6 had a marvellous opportunity to explore our natural world at a three day camp at the John Bosco site with the year 6 from St Joachim's.



The children investigated habitats finding mini beasts and field mice! They also learn how to classify trees and wild flowers as part of their science fieldwork.



"United by its Catholic faith, St. Helen's is a multicultural school, committed to developing the spiritual, academic and social potential of each child"





St. Helen's Catholic Primary School, Chargeable Lane, London, E13 8DW

Tel: 020 7476 1785  
Fax: 020 7476 7907  
info@st-helens.newham.sch.uk

Headteacher: Mrs Gaël Hicks  
www.st-helens.newham.sch.uk

Geography field skills including orienteering were also developed. The children enjoyed canoes, archery, making new friends and sleeping in tents.

The children learnt the story of England's Nazareth and walked the Holy Mile praying the Rosary.



Year 5 started the year with a great introduction to the Science Dome where they explored the solar system discovered more about the earth and space.

### Reading Focus

Thank you to the many parents who attended the curriculum evening to find out more about how we are trying to improve reading.

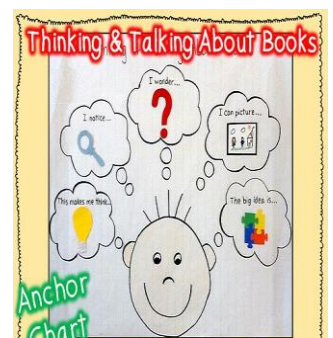
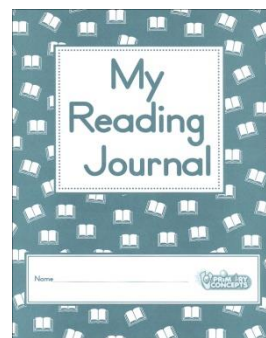
A copy of the presentation is available on our website at:

[www.st-helens.newham.sch.uk/documents/parents/Curriculum-Evening-Sept-2017.pdf](http://www.st-helens.newham.sch.uk/documents/parents/Curriculum-Evening-Sept-2017.pdf)

Please remember to support children in Years 4, 5 and 6 to complete their reading journals.



On 20 September Year 5 also enjoyed our third annual Our Lady of Grace pilgrimage to Walsingham.



The staff received many compliments from other pilgrims for the prayerful mass and the blessing of the children's singing.

As part of our reading promotion we would encourage you to talk to your children about books. A good time to do this is when you collect your child from school.

We were delighted that Fr John Armitage celebrated mass for the two schools.

"United by its Catholic faith, St. Helen's is a multicultural school, committed to developing the spiritual, academic and social potential of each child"





St. Helen's Catholic Primary School, Chargeable Lane, London, E13 8DW

Tel: 020 7476 1785  
Fax: 020 7476 7907  
info@st-helens.newham.sch.uk

Headteacher: Mrs Gaël Hicks  
www.st-helens.newham.sch.uk

This year for cultural history our theme has been Icons and Inventors. Children in KS1 heard stories from Africa



In Key Stage 2 children's awareness of black history was raised with an additional workshop looking at slavery and how it was abolished.



### Reminders

#### Parking

You will have noticed the new road markings outside the school entrances. Please do not park on them at any time as the safety of your children is paramount.

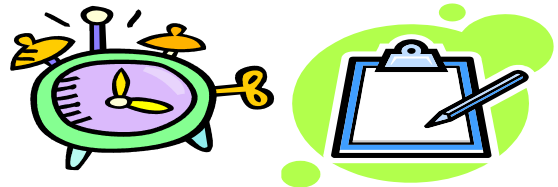


In addition a residential parking zone is in effect in the roads around the school. There are strict penalties for cars that do not have the required permits.



#### Punctuality

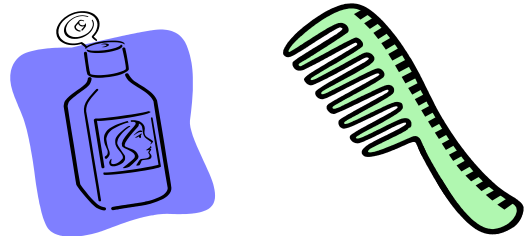
Please remember school starts at 8.55am. It would be appreciated if parents left the playground as soon as the bell rings so that lessons can begin promptly.



School finishes at 3.20pm every day, with clubs ending at 4.30pm.

#### Head Lice

We have experienced a few cases of head lice in school recently. It is important to check your child's hair on a regular basis and ensure all long hair is plaited. Various treatments can be obtained from your chemist.



#### Cold weather

As the weather begins to get colder please ensure your child's name is on their coats, hats, scarves and gloves.



"United by its Catholic faith, St. Helen's is a multicultural school, committed to developing the spiritual, academic and social potential of each child"



